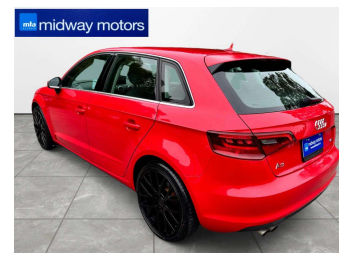
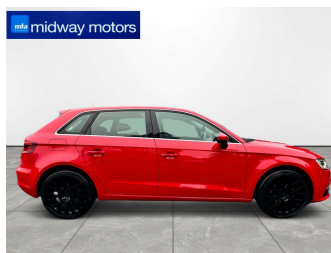


# 2013 Audi A3 A3 Sports Back 1.4TFSI



**Purchase Price** **\$16,990**  
Includes GST  
 Excludes on-road costs of \$395

**Indicative repayments**  
**\$93.78 per week\***  
Based on a 60 month term & no deposit.  
 Total repayments (260) = \$24,382.05

Gain peace of mind with  
**Mechanical Breakdown Insurance. Ask us how.**

**Top features**

- » 13 Airbags
- » 3 lap and diagonal seat belts in the rear
- » Cruise Control
- » ESC
- » Paddle Shift

Body Style  
**Hatchback**

Odometer  
**76,390 km**

Engine  
**1400 cc**

Fuel Type  
**Petrol**

Transmission  
**Automatic**

Wheels  
**Alloy**

VIN  
 -

Interior  
 -

Safety  
 -

Reg No.

-

Ext Colour

**Red**

History

-

Seats

**5 seats**

CO2 Emissions

-

Energy Economy

-

**Stock ID: 3681**



Midway Motors | Phone 03 453 6555 | Email sales@midway.co.nz  
 197 Kaikorai Valley Road, Dunedin 9011, New Zealand  
 www.midwaymotors.co.nz

\* Midway Motors is not a lender nor a financial adviser. Any amounts displayed should not be seen as an offer of finance or taken as financial advice. The interest rate, fees and loan term used in this calculation may not actually represent those available from lenders. Actual interest rates, fees and loan terms will vary per lender and are typically based on an assessment of your credit risk and responsible lending criteria. Any repayment amounts displayed are indicative only and have been calculated using several other indicative inputs. The interest rate used in this calculation is an arbitrary 12.95%, however exact interest rates vary per lender. The term of the loan used in this calculation is 60 months. Exact terms available vary per lender although options typically include 6, 12, 18, 24, 36, 48 and 60 months. This calculation also includes a typical mandatory fee charged by lenders. This is a one-off establishment fee of \$495.00. Typically, this fee can be paid upfront or, as in this calculation, be capitalised over the contract term, ie. included in the loan amount. This fee can vary per lender and other non-mandatory fees and charges may also apply. The total amount of repayments has been calculated by multiplying 260 weekly repayments (based on a 60 month term) by the weekly repayment amount of \$93.78 which equals \$24,382.05. This calculator does not consider any of your own personal circumstances and we strongly suggest you seek budgeting advice prior to committing to any loan contract. Responsible lending criteria and lender terms and conditions will likely apply to any finalised loan contract. Proof of security and/or vehicle insurance may also be required before proceeding.